



# PPS Arctic socially-oriented science activities and collaborations

Tatiana Vlasova  
Institute of Geography, RAS  
PPS Arctic Meeting,  
Moscow 2009



# History of socially-oriented components development in PPS Arctic activities

**2000**- Abisko meeting- Taiga-tundra interface IASC WG- 2000 (TV included as a social science representative)

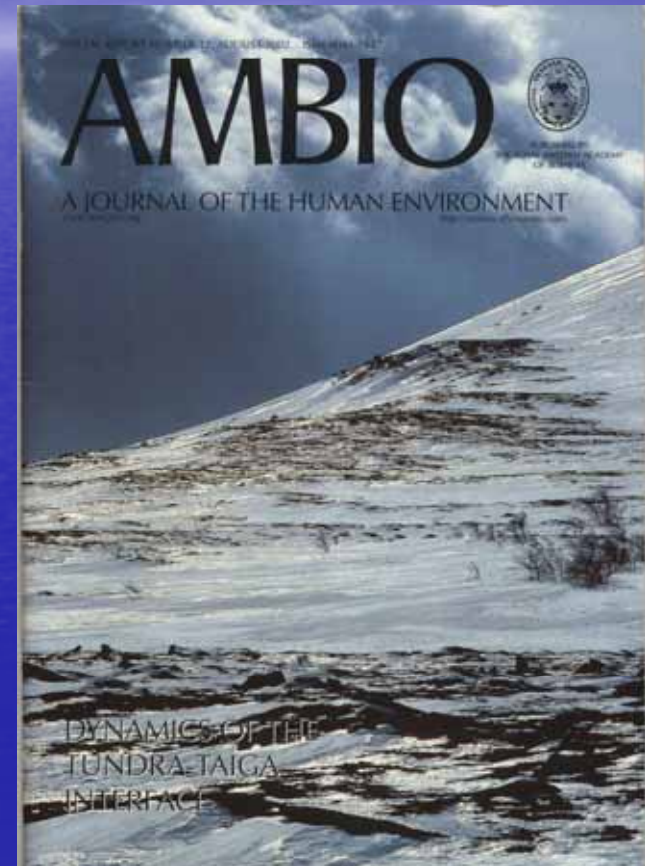
**2002**- Socially-oriented research presented in multidisciplinary AMBIO journal

**2005**- ICARP II (Copenhagen)

TTI group and Canadian group joint meeting (Karen Harper and Nancy Doubleday (*CRE-IGU*))

**2005-2006** PPS Arctic IPY project elaboration and endorsement (TTI group -Annika and Gareth including several socially-oriented EOLs:

**2007** - *IASOS-CASEAS 899 (IG RAS Russia)* was endorsed by IPY Russian National Committee- no special funding

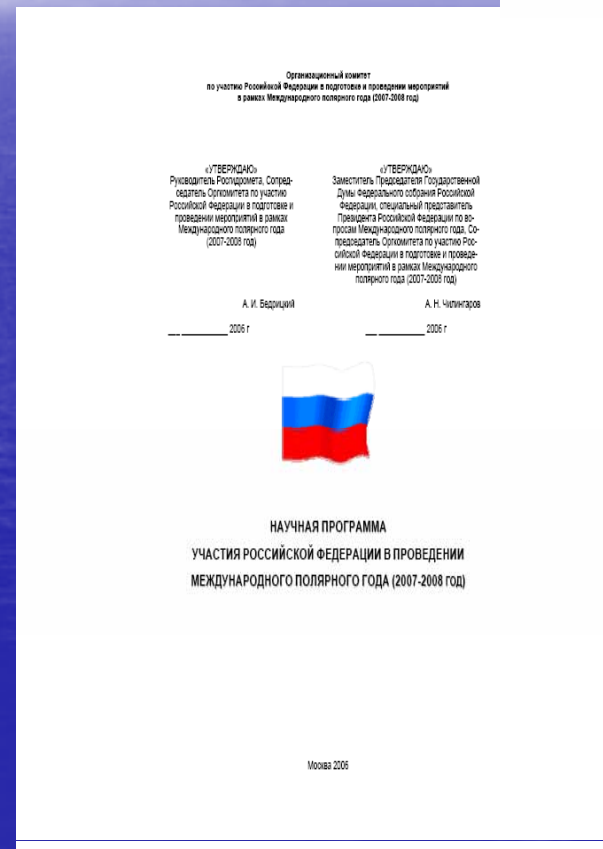




# IASOS-CASEAS 899 project role as a Russian component in PPS Arctic



- Within the list of RESULTS of the Russian scientific program “the development of tools and methods of socially-oriented monitoring” is put on one of the first places in this Scientific Program.
- As it is written in SPRP “The development of the IASOS-CASEAS 899 is one of the socially oriented direction of the monitoring system, envisioned to be constructed during the IPY” (p.77)



Scientific Program of Russia Participation in the IPY (SPRP)

2007 – 2008 Elaboration of the PPS  
Arctic Manual  
With component on socioeconomic  
and cultural observations

Challenges- integrating different  
Scientific schools and approaches  
2007 –TV-ND field trip to Nunavut

**Section IV: Common protocols for regional socioeconomic and  
cultural observations**

Revision: 25 May 2008

## PPS Arctic Manual

Common protocols for field measurements  
and handling of collected material

Compiled and discussed at the 2<sup>nd</sup> annual  
meeting in Tromsø, March 2007

Completed and approved by the PPS Arctic  
group April 2008.

Edited by Annika Hofgaard and Gareth Rees



# Common protocol on socially-oriented observations of the Quality of life (PPS Arctic Manual)

- 1. What are main issues affecting the quality of life in the region where you are? Please list issues of concern to your quality of life (e.g., nature, economic, social, culture, governance...etc.).
- 2. What are the main driving forces contributing to the issues you listed in your answer to question 1 above?
- 3. What are the main consequences for quality of life of the issues that you listed in your answer to question 1 above ?
- 4. What can be done to achieve a better quality of life and sustainability ?
- 5. What are main indicators, or variables that we should observe to understand the trends for better and worse in the quality of life?
- 6. Is your environment healthy? (Yes or no, with an invitation to add comments)
- 7. Is your life better than it was 5 years ago? (Yes or no, with an invitation to add comments)
- 8. Is your personal health good? (Yes or no, with an invitation to add comments)
- 9. Are you happier now than you were 5 years ago? (Yes or no, with an invitation to add comments)
- 10. Are environmental changes that are taking place



Nunavut, Cape Dorset, 2007



# BENEFITS



Natural and Social Science Research Cooperation in Northern Russia and Norway for Mutual *Benefits* Across National and Scientific Borders

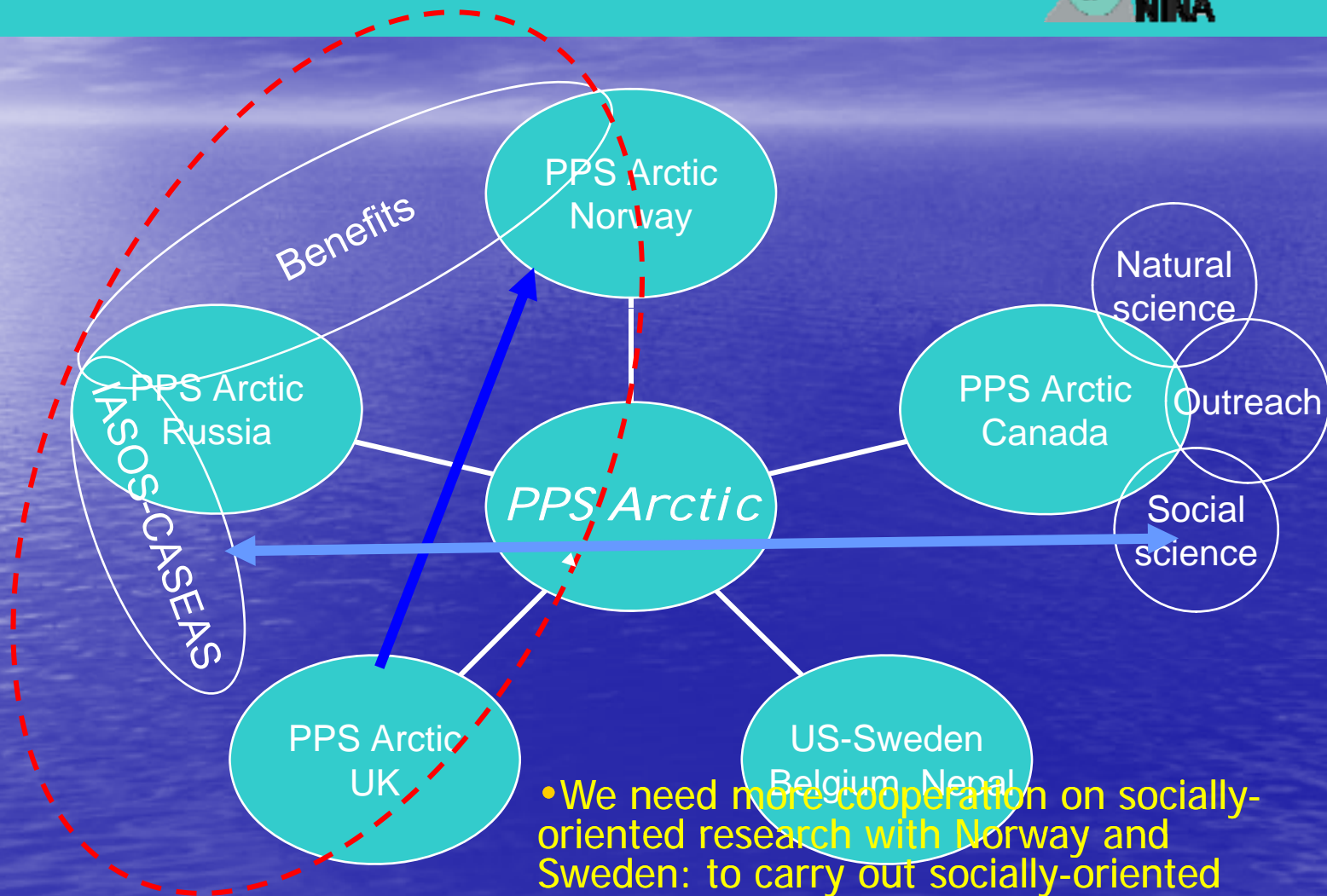
- Social Theme in BENEFITS – the construction of socially-oriented observation (System) network
- The BENEFIT project gives real start to our socially-oriented observations (SOO) according to PPS Arctic Manual in the Russian North



The place of SOO System in PPS Arctic

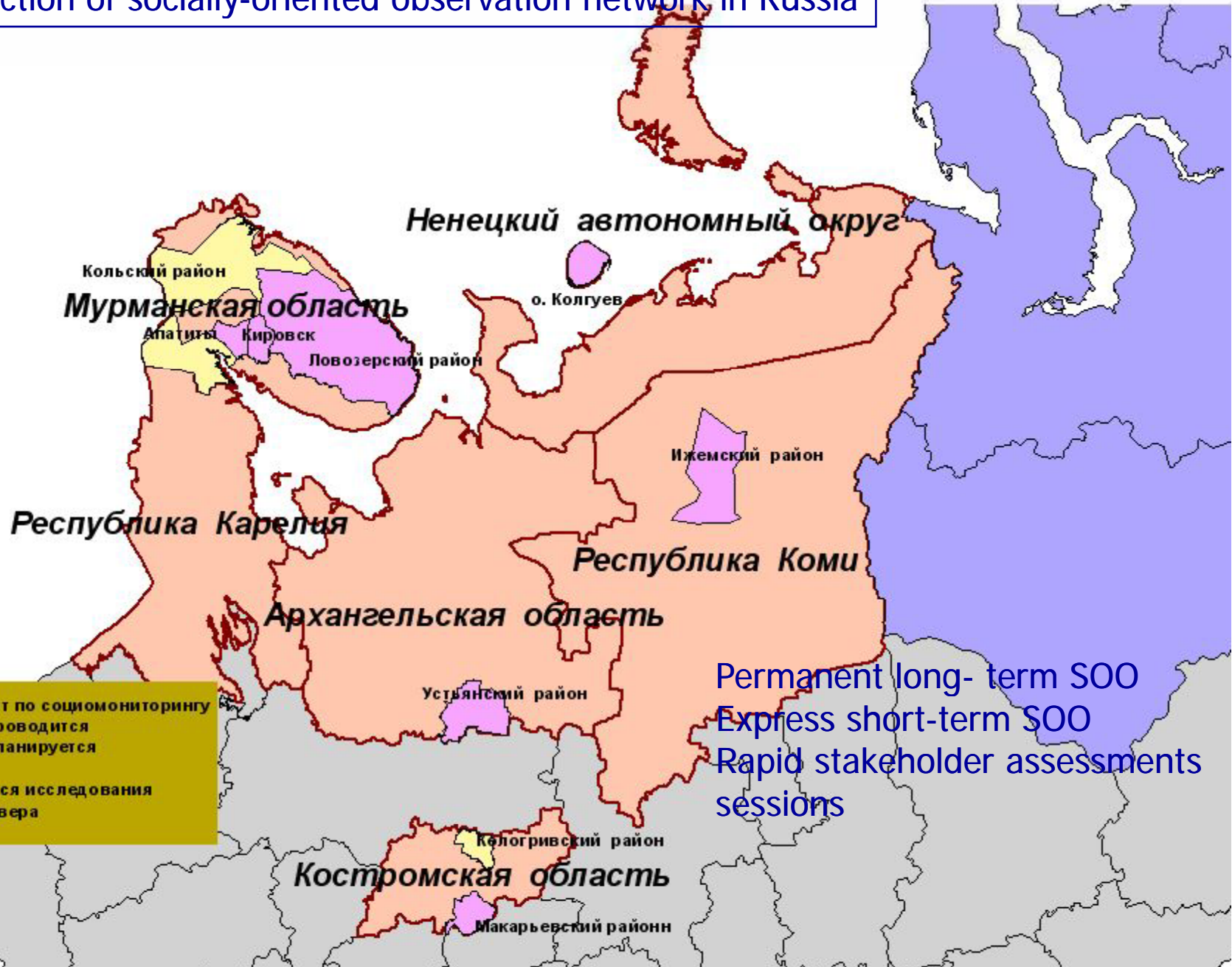
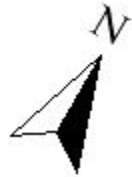
# PPS Arctic network structure

Annika Hoffgard



• We need more cooperation on socially-oriented research with Norway and Sweden: to carry out socially-oriented observations in taiga-tundra ecotone zone of these countries

ионы субъектов Российской Федерации, в которых проводится и планируется социомониторинг  
The construction of socially-oriented observation network in Russia



ны проведения работ по социомониторингу  
Социомониторинг проводится  
Социомониторинг планируется  
оны РФ  
В которых проводятся исследования  
Прочие Крайнего Севера

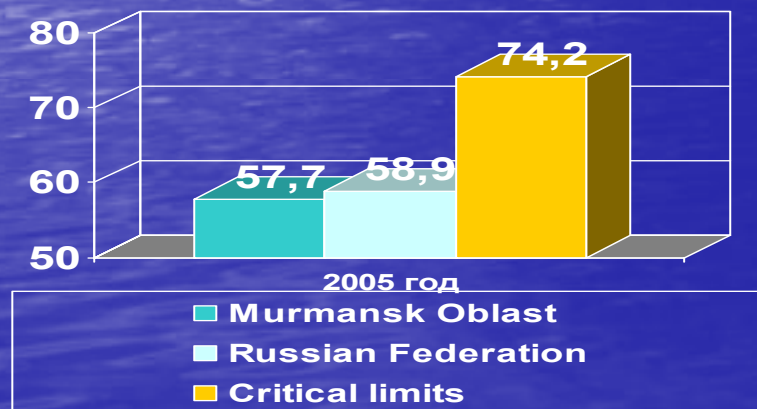


## Data:

Tools and Methods for key indicators of quality of life identification and acquisition by science with local and traditional knowledge integration



Life expectancy at birth, men, years



Stakeholder sessions (Apatity 2008)  
Statistics, literature, maps, images,  
Photos  
Semi structured interviews  
Analyses of samples of drinking water  
and food in polluted areas  
Phenological observations

# Students involvement

- Andrey Medvedev, scientist from IG RAS has recently received his Ph.D
- Andrey leads students MSU practice in Khibiny. Two students together with him have made socially-oriented observation in Apatity-Kirovsk region (summer 2008) and are now Andrey is going with students of MSU to a new case study region in Komi Republic - the National park Ugidva. (North-West of Komi Republic)

# Cooperative partners in socially-oriented observation

- IPY JC Sub-committee on Observations
- SAON – IASSA
- ASI and other IPY projects
- Arctic Council (AMAP, CAFF, SDWG, etc.)
- Ministries of RF ( Rosgidromet, MNR, Ministry of Regional Development
- RAIPON
- NINA (Norway), Carleton University (Canada), Abisko Station (Sweden)
- IPY Russian National Committee



# Thoughts for the future of a social science in PPS Arctic and natural-social science integration

- Canadian-Russian interaction in PPS Arctic social science has been launched
- We need more cooperation on socially-oriented research with Norway and Sweden: to carry out socially-oriented observations in taiga-tundra ecotone zone of these countries
- As Ambio journal, multidisciplinary publications are needed both in Russian and in English. Structure of the book should be discussed: natural science, social science, remote sensing
- The continuation of socially-oriented observations in Apatity-Kirovsk MO, Arkhangelsk and start in Kandalaksha region and Komi Republic (North-West)
-

# Funding situation

- Norway: BENEFITS Natural and Social Science Research Cooperation in Northern Russia and Norway for Mutual *Benefits Across National and Scientific Borders*
- "*Norwegian Cooperation program on Research and Higher Education with Russia*"
- IASOS-CASEAS 899 previously has been partly supported by Russian Academy of Sciences Presidium Programme N 16 2005-2008 Project 6.2  
Now New project - Russian Academy of Sciences Presidium Programme N 16 2009-2011 Project 5.4 "Socially-oriented observations in the North" (SOO) is adopted - Money (How much ?)

In order to develop SOO Network we need more human and financial resources



Thank you !